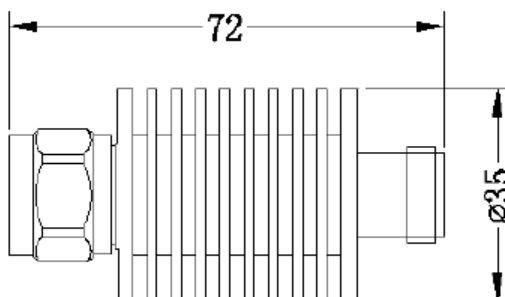


N, DC-6GHz, 20W

Electrical Specifications

- ✧ **Nominal Impedance:** 50 Ω
- ✧ **Power Rating:** 20W
- ✧ **Connector Type:** N(Male/Female)
- ✧ **Operating Temperature:** -55°C to +125°C
- ✧ **Dimension:** $\Phi 35 \times 72$ mm
- ✧ **Net Weight:** 210g
- ✧ **RoHS Compliant**

Outline Drawing (mm)



Part Number	Frequency Range(GHz)	Attenuation Value & Accuracy (dB)				VSWR (Max.)
		1-9	10	20	30	
CA20-XX-N-3	DC-3	±0.4	±0.5	±0.6	±0.8	1.20
CA20-XX-N-6	DC-6	±0.6	±0.8	±0.8	±1.0	1.25

* xx refer to attenuator value in dB.

Notes:

1. The coaxial fixed attenuator must pay attention to the power input direction.
2. Input power shall meet the requirements of the power derating.
3. General peak power 10 times rated power (5 μ s pulse width, 1% duty cycle).